



A layering must-have made of ultra-soft, snag-resistant microterry-it's as comfortable as it is polished in appearance.

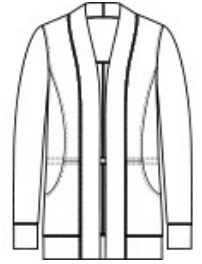
- 6.8-ounce, 62/33/5 cotton/rayon/spandex microterry
- Snag-resistant
- Tag-free
- Open front cardigan
- Interior drawcord with toggles at waist
- Front pockets
- Curved back yoke
- Front and back seaming details
- Self-pieced cuffs and hem

Due to the nature of performance fabrics, special care must be taken throughout the printing process.

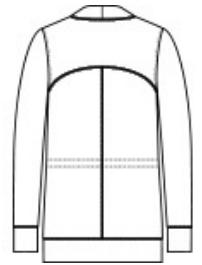
**

CARE INSTRUCTIONS

Machine Wash Cold With Like Colors. Do Not Bleach. Tumble Dry Low. Cool Iron If Necessary.

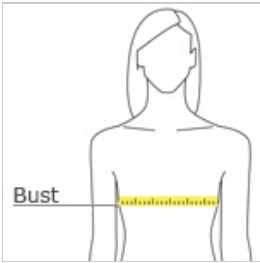


front



back

HOW TO MEASURE



BUST

Measure under the arm and around the fullest part of the bust with arms down, keeping tape horizontal.

SIZE CHART

| | XS | S | M | L | XL | XXL | 3XL | 4XL |
|------|-------|-------|-------|-------|-------|-------|-------|-------|
| Size | 2 | 4/6 | 8/10 | 12/14 | 16/18 | 20/22 | 24/26 | 28/30 |
| Bust | 32-34 | 35-36 | 37-38 | 39-41 | 42-44 | 45-47 | 48-51 | 52-55 |

COLOR INFORMATION



Aegean Blue



Charcoal
PMS 426C



Deep Black
PMS BLACK C



River Blue Navy
PMS 7547C